



Photo courtesy of Tracey Hirtle - taken March 30, 2021 from the "look out" just west of the hall

# Notes from the BHCL board

## March Board Meeting

On March 9th the monthly Beverly Heights Community League board meeting was held virtually. Highlights include:

- ◆ Guidelines, procedures and policies are being reviewed by the board members to develop a plan to safely reopen the Beverly Heights Community Hall, Family Centre and sports building to programs, events and rentals once the province allows indoor gatherings. No timeline has been set, and until plans are in place rental showings, applications and deposits are on hold.
- ◆ Our casino on April 1 & 2 at Century Casino has been cancelled due to all casinos remaining closed. We have been added to a short-notice casino list.

**\*\*\*Please email Tracey at [volunteer.BHCL@gmail.com](mailto:volunteer.BHCL@gmail.com) if you would like to be added to the volunteer list and we will contact you as soon as we get a date to see if you are available!**

- ◆ Our Annual General Meeting will be held Tuesday April 13, 2021 at 7pm. The meeting will be held virtually. See the board roles up for election on page 2.
- ◆ The Rundle Heights Playground Revitalization Committee continues work on planning and fundraising.

The next regular BHCL virtual board meeting is Tuesday May 11 at 6:30pm. Community league members are welcome to attend the monthly meetings, email [volunteer.bhcl@gmail.com](mailto:volunteer.bhcl@gmail.com) for a meeting link if you would like to join.

## Get your 2020/2021 Membership

Your Community League membership card is valid from September 1 to August 31. Visit [beverlyheights.ca/memberships/](http://beverlyheights.ca/memberships/) for membership benefits and more information.

**Price:** \$25 Family \$15 Single \$5 Senior  
 Need a membership? Email Crystal at [membersbhcl@hotmail.com](mailto:membersbhcl@hotmail.com). Once your information is confirmed she will review your payment options - send an e-transfer to treasurer.BHCL@gmail.com or drop off / mail a cheque (payable to **Beverly Heights Community League**).

Once payment is received your card and skate tags will be delivered!

*Memberships are also available at Edmonton Servus Credit Unions or online at*



*EFCL.org (service charge will be applied)*

**Community Conversation:** Join the Beverly Heights Community League Public Group on Facebook and join the conversation! Topics are posted Sunday with a winner chosen at random from the comments on Thursday. The winner receives a reusable BHCL bag.

# COMMUNITY CONNECTIONS

BEVERLY HEIGHTS  
 COMMUNITY LEAGUE  
 ENEWSLETTER  
 APRIL 2021

*Blue underlined text is a hyperlink.*

## IN THIS ISSUE

Join the BHCL Board	Page 2
AGM & Board Positions	Page 2
Neighbourhood Watch	Page 3
Rundle Heights Park Redevelopment	Page 3
Abundant Community / Pop-Up Community Garden	Page 4
Connecting: Links	Page 4
City of Edmonton notes for our area	Page 5
Community Partner Page	Page 6

## Contact us!

Do you have questions for the board? Feel free to email [Volunteer.BHCL@gmail.com](mailto:Volunteer.BHCL@gmail.com) or visit our website [beverlyheights.ca](http://beverlyheights.ca)

Join our Facebook group [Beverly Heights Community League \(Public Group\)](https://www.facebook.com/BeverlyHeightsCommunityLeaguePublicGroup) to keep in touch and to reach out if you need assistance.



# Join the Beverly Heights Community League Board!

Volunteerism is crucial to the continued success in bringing our community together, and we sincerely appreciate those who take the time to lend a hand on the board, at our casino, our social, fundraising and community building events, for the variety show, programs, fun events and bartending for rentals over the years.

Have you ever thought that it would be wonderful to coordinate or lead new initiatives for the community, or that you would plan and do things a bit differently? Are you looking for a way to give back to your community? Do you not only have ideas, but are willing to lead a committee or coordinate?

This is your opportunity! I would like to invite you to join us at the Virtual AGM on Tuesday April 13, 2021 and consider joining the board. Board member training is available online from the EFCL website and most past board members will lend a hand until you are up to speed. You can make a difference!

## BHCL Annual General Meeting: Board Positions

### The BHCL AGM is

**Tuesday, April 13, 2021 at 7:00pm**

All Beverly Heights Community League members are welcome, and encouraged to attend!

Hear what the current board has accomplished this past year, learn about community league activities and programs, and elect board members for vacant and term positions.

### Virtual Meeting

As the current COVID-19 restrictions do not allow indoor gatherings, the BHCL AGM meeting will be held virtually. You can join on your computer or by phone from the comfort of your own home!

Click [here](#) for the meeting link.

You will need to download a free RingCentral Meeting App on your phone or computer.

The link is posted on BeverlyHeights.ca, has been emailed to current community league members and has been posted on Facebook. For more information or to have the virtual meeting link sent, please email volunteer.bhcl@gmail.com.

### Membership Required to Vote

Do you have your Beverly Heights Community League 2020/2021 membership? You will need this to vote or to be elected into a board position. **Because the meeting is virtual, we will not be selling memberships the night of the meeting so please plan ahead!** See the information on page 1 of this newsletter on how to get a membership - if you purchase directly from our membership director, Crystal, by emailing membersbhcl@hotmail.com you save the \$5 service fee charged if you purchase on EFCL.org or at Servus Credit Union.

### Board Positions

Board positions are elected for 2-year terms. Vacant positions will be for a 1-year term and up for election in the usual year. Incumbents are welcome to stand for re-election.

All board members will attend monthly meetings (currently the second Tuesday of the month at 6:30 pm) and will prepare and present a report at the Annual General Meeting. Additional committee work may be available and is optional unless part of the position's duties.

Beverly Heights Community League Board Positions up for election in 2021	
<b>EXECUTIVE</b>	
<b>Vice President:</b>	Chairs management committee meetings, assist with organizing events, fills in for president at meetings as required. Monitor bookings of facilities and ensures use is acceptable and within City of Edmonton Tripartite Agreement guidelines.
<b>Secretary:</b>	Distributes correspondence to board members. Records minutes at all board and management committee meetings. Collects items for meetings and sets agendas. Manages email voting and elections.
<b>Treasurer</b> (Vacant, will be a 1-year term):	Monitors budgets, makes deposits, enters transactions. Chairs Finance Committee, reports on financial state of the league. Assist with grant applications.
<b>DIRECTORS</b>	
<b>Civics Director:</b>	Monitor provincial and municipal government news and actions that affect our community and promote discussion at meetings. Review the lobbying efforts of Edmonton Federation of Community Leagues, respond to surveys, and express community supported opinions at government sponsored meetings. Represent the community league on committees and at city hall meetings as needed.
<b>Membership &amp; Community Liaison Director:</b>	Maintain current member list and sell memberships throughout term and at annual events. Manage annual recruitment drive. Order annual membership supplies. Gather input from members and residents on events, programs, and use of facilities that are desired in our community. Co-ordinate with other directors in planning, scheduling, and soliciting volunteers to run events. Organize lifetime member and volunteer appreciation event.
<b>Rink Director:</b>	Oversee preparation and maintenance of ice and rink building. Assist with snow removal at rink and hall. Establish rink use schedule. Supervise staff, assist President in hiring. Coordinate use of space for other programs, including batting cage use in summer. Check building regularly when not in use.
<b>Sports Director:</b>	Minimum 4 season/two-year commitment required. Organize and promote soccer teams including sign up, registration with Edmonton leagues for indoor and outdoor season games and tournaments, set team rosters, order, inventory and maintain equipment. Represent league at 8-15 mandatory meetings per year (i.e. EMSA). Solicit and manage volunteer coaches, team managers and trainers. Assist in fundraising.
<b>Variety Show Chairperson:</b>	Chair the Variety Show Committee, present and manage budget, and act as liaison between the VS Committee and the board.

# Neighbourhood Watch

## Graffiti

Here are some of the best ways to prevent graffiti vandalism:

- Maintain your property,
- Remove graffiti/tagging as soon as it occurs,
- Enhance security around your property by keeping the area well lit as well as open sight lines.

If graffiti occurs on your own property you should take photos and file a police report at your local station or online [here](#). For extensive graffiti, property owners can apply for professional graffiti cleaning assistance with the City of Edmonton. Click [here](#) for more information.

On property other than your own, call 311 or use the 311 App to report graffiti vandalism.

Addressing the issue of vandalism is a shared responsibility in a community - thank you for keeping watch!



## Edmonton Neighbourhood Watch Programs

Visit <https://enwatch.ca/programs/> for more information about the Door Sticker Program, Walk your Block Program, Neighbourhood Sign Program, Block Party Program and Awareness Program.

## Register your bike

Have you registered your bike yet? Register your bike on <http://bikeindex.org> so others can identify it in the case it goes missing.

If you find a bike, find the serial number and search the registry to see if you can connect with the owner.

The EPS outlines the fundamentals of protecting yourself from bike theft. Be sure to record your bikes serial number, lock your bike safely and securely, and report it should it go missing.

Read more: <https://www.edmontonpolice.ca/.../Property.../StolenBicycles>

# Rundle Heights Park Redevelopment Project

## 50/50 FUNDRAISER!

Congratulations to Laura Tetrault, the winner of our March 50/50 draw.

Thank you to everyone who participated, you helped us raise \$987.06 for the park project.

*Funds from the raffle will support the build of our new Rundle Heights Playground. Thank you for supporting this important community project!*

## Boston Pizza Receipts

St Jerome is collecting receipts to raise money for the park project. Need details? Contact [Stjeromeparentcouncil@gmail.com](mailto:Stjeromeparentcouncil@gmail.com).

## Donations with tax receipts

Looking for a way to support the park redevelopment but want a tax receipt? Donations of \$20 and more are eligible for a tax receipt. Please contact [stjeromeparentcouncil@gmail.com](mailto:stjeromeparentcouncil@gmail.com) or find the donation information on our:

**Facebook page:**

[Rundle Heights Park Redevelopment](#)

**Website:**

[beverlyheights.ca/rundle-heights-park-redevelopment/](http://beverlyheights.ca/rundle-heights-park-redevelopment/)

## And more!

**Check with your workplace** to see if they have any in-kind donations or grants available to employees that you could donate to the park project.

Watch for more **online fundraisers** and a late spring **bottle drive** (date TBA).

Keep an eye out for opportunities to provide more feedback or to join in on some public engagement opportunities, watch the Facebook page and the E-newsletter for more information to come.

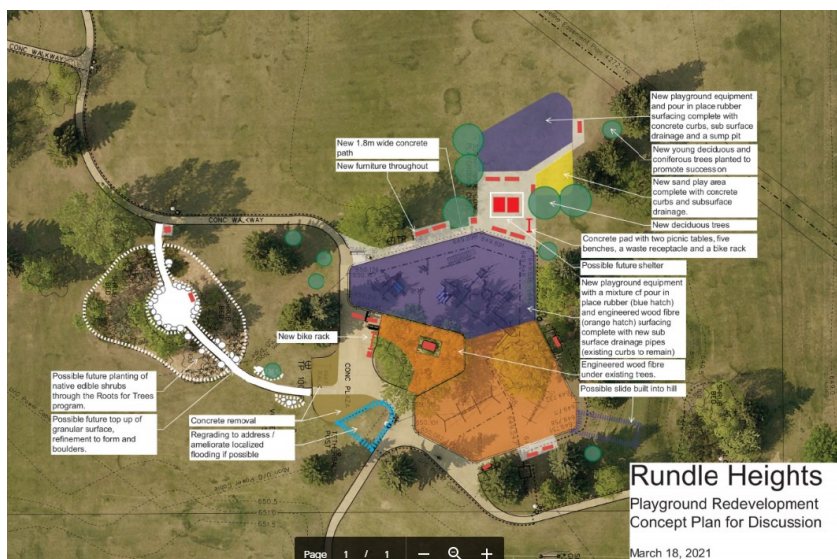
## Concept Phase Update

The Park committee has agreed to this updated concept plan, estimated at \$790,533. The next steps are to have the 3 boards represented in the committee (BHCL, Ivor Dent and St Jerome) approve the plan and the budget before we proceed to the next exciting stage, design!

We are hard at work fundraising and applying for grants to raise money. The goal is to have all the necessary funds in place by Dec 2021; park build Spring/Summer of 2022. **A few ways to help:**

## Donate your bottles

Drop off your bottles at the Beverly Bottle Depot and ask that the proceeds are added to the Rundle Heights Park Project. Your donation adds up!



# Abundant Community / Pop-Up Community Garden

## A message from Abundant Community Neighbourhood Connector, Rayna Haythorne:

As the representative for our Abundant Community initiative here in Beverly/Rundle, I oversaw the Pop Up Community Garden project. We had two dozen enthusiastic gardeners interested in taking on a plot to grow vegetables, however as gardens began to produce, the thefts and pilfering began.

Everyone sustained losses here and there, then near the end of the season there were two sweeps of massive theft and damage that decimated everyone's harvest, and season's time, energy and expense of tending.

Gardeners were upset, frustrated, and devastated and there was no remedy to restore any semblance of benefit, or so I thought. Some openly shared their sense of loss on social media, others quietly emailed me, everyone shared a feeling of loss and betrayal.

I listened as best I could, echoing their frustration and observed as the stages progressed to the "why"? That seemed to be a turning point as most began to reflect on the past year, on how difficult it had been with Covid-19 and how much they had sacrificed and lost because of it, then attention turned to imagining the sacrifices and losses that others may have experienced within their community. Many, if not all, concluded that if someone was so desperate and in need of food to steal from a community garden, they were ok with it being taken, that the thieves were in more need of it than them.

Then something unexpected happened, people began offering the community gardeners harvest from their own backyard gardens, and connections were made through the empathy and action of the community doing what it could to heal the wound. To me, it was profound, and so

much more than the over-simplification of a "silver lining". Not only did it mirror the restorative forces in nature, but how in humanity, sometimes it takes the worst to happen to bring out the best. The world was suffering from a pandemic, and people had to do things in a way they had never done before.

People's individual actions became responsible for the health of all, suddenly there was an awareness of how interconnected we all really are, and that we don't live in isolated bubbles. Thinking and acting for collective good has not been at the forefront of people's minds and with Covid it suddenly became a choice for everyone. I believe this thinking influenced everyone's response to the lost gardens.

And despite the losses, and hard work for "nothing", and feeling defeated, I'm so proud to say that people want to try again this year. Not only for themselves, but there are offers to create beds and signage to designate a garden free for the taking – in small amounts – for anyone who needs it, and post food resources available in our community.

I could have never foreseen this outcome from the beginning. It reminds of the quote by Deborah Moggach, "Everything will be alright in the end, so if it is not alright it is not the end".

Rayna Haythorne, Neighbourhood Connector  
780-710-5777 (call or text)  
[neighbouringbeverly@gmail.com](mailto:neighbouringbeverly@gmail.com)

## URGENT - Can you help?

**Applications for the 2021 season Pop-Up Community Garden are due April 4, 2021.** If anyone would like to help out with the Beverly/Rundle Pop Up Community Garden application (and management if we get approved again) this year, please email [volunteer.bhcl@gmail.com](mailto:volunteer.bhcl@gmail.com) or text/

call me at 780-710-5777, thanks!

Permanent garden info from City of Edmonton  
<https://www.edmonton.ca/.../garden.../community-gardens.aspx>

Some inspiration  
<https://tamersoliman.com/condo-garden-project/>

There is also a Yard Share YEG program where people who have gardening space can share it with those who don't and receive some produce in return. This program is currently run by Goodworm, there is a link on their website. Program offers workshops and free seeds, soil, and compost to gardeners.  
<https://www.goodworm.org/>

## Location, location, location

A Facebook poll asking residents where they think the garden should be located includes the same location as last year, in the laneway tot park just east of 38 St and just north of 106 Ave, or at the Lion's Park on 115 Ave near 42 St. The Lion's park is ahead by 1 vote as of March 31.

## Abundant Community Beverly/Rundle

Check out the updated Abundant Community website page <https://beverlyheights.ca/abundant-community-edmonton-beverly-rundle/>

[Abundant Community Edmonton](#)

[Connected Neighbours Community Card:](#)

Print, fill it in, and drop it off in your neighbours' mailbox!

[Block Connectors Resource Guide:](#) Find out more about how Abundant Community works and your role as a Block Connector .

# Connecting in your community

## Facebook links:

[Beverly Heights Community League](#)

[Rundle Heights Park Redevelopment](#)

[Beverly Historical Society](#)

[Beverly Page Community News and Classifieds](#)

[Beverly Business Association](#)

[Your Alberta \(Government of Alberta\)](#)

[Edmonton Federation of Community Leagues - EFCL](#)

[City of Edmonton](#)

[City of Edmonton Recreation Centres](#)

[Edmonton Public Library](#)

[Edmonton Police - Crime Prevention](#)

[Community Police - Northeast](#)

[Edmonton Neighbourhood Watch](#)

## Report Crime:

Remember if you see something suspicious report it by calling 780-423-4567 or on the EPS Mobile App.

## Website links:

[Abundant Community Edmonton](#)

[Alberta.ca](#) (for COVID information)

[BeverlyHeights.ca](#)

[Beverly Historical Society](#)

[www.beverlybia.ca](#)

[https://www.edmonton.ca/city\\_government/municipal\\_elections/for-voters.aspx](https://www.edmonton.ca/city_government/municipal_elections/for-voters.aspx)



## Community Connections

Beverly Heights Community League eNewsletter

Editor: Tracey Hirtle,

BHCL Publicity & Communications Director

[Volunteer.BHCL@gmail.com](mailto:Volunteer.BHCL@gmail.com)

Website: [BeverlyHeights.ca](#)

Main Hall & Family Centre:

4209 111 Ave NW, Edmonton AB T5W 0K3

780-477-2458

Sports Building (Rink):

10906 40 St NW 780-477-5318

Rental Inquiries: [Rentals.BHCL@gmail.com](mailto:Rentals.BHCL@gmail.com)

General Inquiries: [Volunteer.BHCL@gmail.com](mailto:Volunteer.BHCL@gmail.com)

Do you have suggestions for stories? Questions to be answered? Let us know!

# City of Edmonton notes for our area

## New Transit Routes Launch April 25, 2021

On April 25th the new transit routes will launch and our route 141/142 becomes Route 101 - a "local" route type.

The new route will start at Riverview Crossing, travel through our neighbourhood (same route as before), then will travel west along 112 Avenue to the Stadium Station, turn and go back the same way.

Route frequency will be 30 minutes or better on weekdays/midday on weekends and 60 minutes or better all late evenings/weekend morning and evenings.

Find more information at [https://www.edmonton.ca/projects\\_plans/transit/bus-network-redesign.aspx](https://www.edmonton.ca/projects_plans/transit/bus-network-redesign.aspx) to download and print route brochures (or click [here](#)) and for details about the Transit App you can use to preview your new route.

## Garbage & Food Scrap Carts

The garbage and food scrap cart initiative will roll out in Beverly and Rundle in May/June 2021. Here are some things to note:

- Carts will be delivered to homes in this area between May 9-29, with the first garbage day with the new system on June 4. There is a cost for replacement carts - be sure to mark with your address or name.
- You will receive a 240L trash bin, a 120L food scrap bin, and a food scrap pail to use in the house. You will receive an information package and a new collection schedule.
- Garbage carts will be collected every two weeks. Lids must close completely.
- The food scraps cart is collected weekly from spring to fall, and every two weeks in winter. Yard waste and grass clippings can be added to your bin if there is space.
- Recycling is collected weekly - use the usual blue bags.
- Yard waste will be picked up seasonally, with two collections in the spring and two in the fall.

Click [here](#) for more details about the waste cart roll out, find out when your cart will be delivered, and to learn more about how to sort your trash, recyclables and food scraps.

Want to learn more about your new carts and how to sort with the new system? Sign up for a virtual education session at [edmonton.ca/waste](https://www.edmonton.ca/waste). You can ask your questions live during the session. Sessions begin March 3rd and go until September. Registration is open!

## Road Closure

Our Neighbourhood Resource Coordinator, Anna, shared: "The bridge on Ada Boulevard over Gretzky Drive is scheduled for renewal this year. It will be closed starting April 2021 to vehicles, cyclists and pedestrians. A detour to 112 Avenue is suggested." Project info at [www.edmonton.ca/adaboulevard](https://www.edmonton.ca/adaboulevard)

Ada Boulevard between this bridge and 50th Street is also scheduled for neighbourhood renewal this year to replace sidewalks, streets, lamps and gutters. Project info at [www.edmonton.ca/buildinghighlands](https://www.edmonton.ca/buildinghighlands)

## City Council to Review the Decision to Route a Major Sewer Line to the Gold Bar Plant

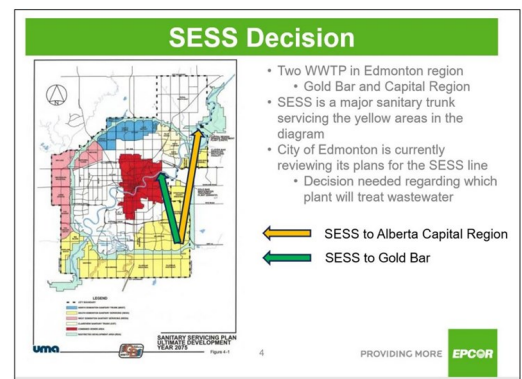
On April 12, 2021, Edmonton City Council's Executive Committee will discuss options to revisit the decision to re-route and construct a major Sanitary Sewer Trunkline to the Gold Bar Waste Water Treatment Plant instead of the long-planned Alberta Capital Region Wastewater Treatment Facility.

The Beverly Heights Community League Board supports the efforts of the "Save Gold Bar Park Alliance" to have City Council revisit this sewer trunkline decision and provide appropriate city council governance, transparency, and public input.

Interested community members who would like to virtually attend and/or register to speak during the April 12, 2021 City Council meeting may do so by following this link. [https://www.edmonton.ca/city\\_government/council-committee-meetings.aspx](https://www.edmonton.ca/city_government/council-committee-meetings.aspx)

For information about the Save Gold Bar Park Alliance please view their Facebook page at: <https://www.facebook.com/GoldBarParkAlliance/>

## South Edmonton Sanitary Sewage Trunkline Decision

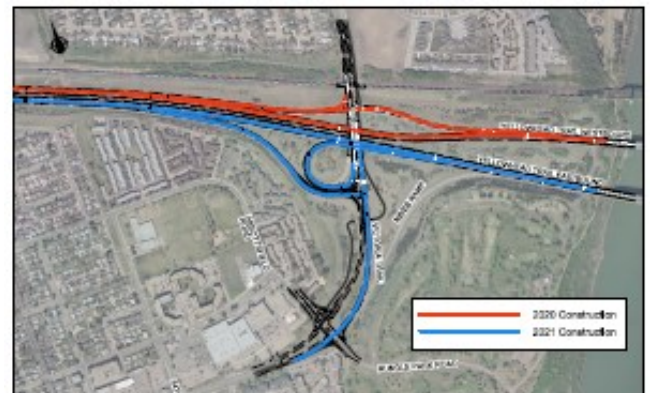


## Yellowhead Trail East Widening

During the engagement sessions held in 2019, concerns were raised about safe merging operations at eastbound Yellowhead Trail from Victoria Trail. Bryon Heroux, Project Manager with the City of Edmonton reports "Building on this slightly, the changes we are making to Yellowhead Trail (mainly adding an additional through lane) means that there is no longer capacity to support a dedicated freeflow lane from the NB Victoria Trail to EB Yellowhead Trail on-ramp as the Beverly Bridge is only three lanes across. Additionally, maintaining the two merge locations (NB and SB Victoria Trail to EB YHT) with three through lanes on Yellowhead Trail would mean that the length of merge lanes would not be sufficient."

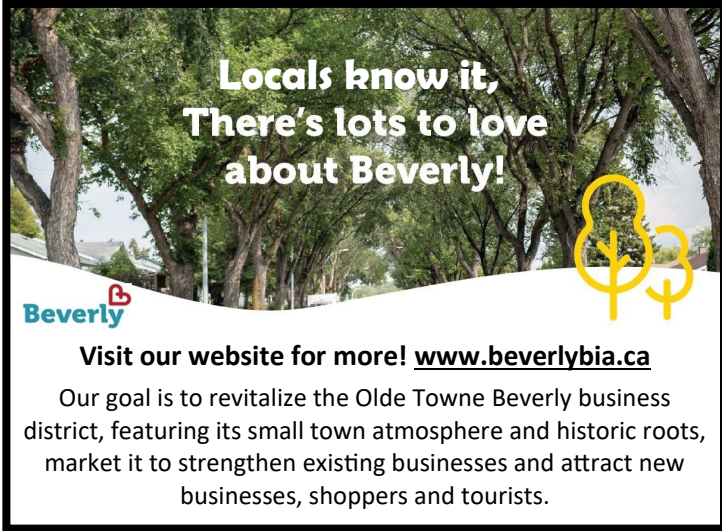
To access Yellowhead Eastbound, rather than heading east on 118 Ave and taking the current ramp there will be a new ramp constructed near the Victoria Trail bridge. You will turn left onto the turn ramp to head east. This construction will be completed before the current ramp is closed, and this will be completed by the fall of 2021.

More general information about the Program and the East Widening Project can be found at [https://www.edmonton.ca/projects\\_plans/yellowhead-trail-freeway-conversion.aspx](https://www.edmonton.ca/projects_plans/yellowhead-trail-freeway-conversion.aspx).



# Community Partner Page

## Beverly Business Association

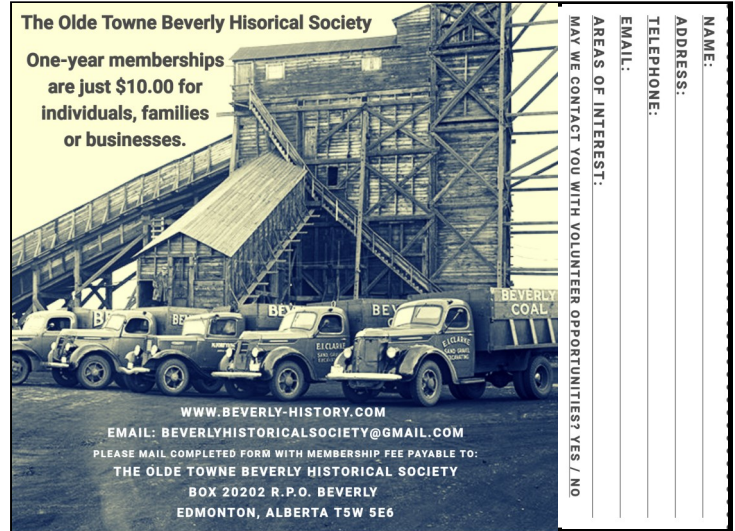


**Locals know it,  
There's lots to love  
about Beverly!**

**Visit our website for more! [www.beverlybia.ca](http://www.beverlybia.ca)**

Our goal is to revitalize the Olde Towne Beverly business district, featuring its small town atmosphere and historic roots, market it to strengthen existing businesses and attract new businesses, shoppers and tourists.

## Olde Towne Beverly Historical Society



The Olde Towne Beverly Historical Society

One-year memberships are just \$10.00 for individuals, families or businesses.

NAME: \_\_\_\_\_  
ADDRESS: \_\_\_\_\_  
TELEPHONE: \_\_\_\_\_  
EMAIL: \_\_\_\_\_

AREAS OF INTEREST:  
MAY WE CONTACT YOU WITH VOLUNTEER OPPORTUNITIES? YES / NO

WWW.BEVERLY-HISTORY.COM  
EMAIL: BEVERLYHISTORICALSOCIETY@GMAIL.COM  
PLEASE MAIL COMPLETED FORM WITH MEMBERSHIP FEE PAYABLE TO:  
THE OLDE TOWNE BEVERLY HISTORICAL SOCIETY  
BOX 20202 R.P.O. BEVERLY  
EDMONTON, ALBERTA T5W 5E6



**Primary Care Network**  
EDMONTON NORTH | Rundle Health Centre

[enpcn.com](http://enpcn.com) 780-479-1533

Group programs are offered virtually and you can self-refer.



**The CANDORA Society**

Call: 780-474-5011  
Email: [info@candorasociety.com](mailto:info@candorasociety.com)  
Website: [Candora.ca](http://Candora.ca)  
Facebook: <https://www.facebook.com/candorasociety>



**Wecan Cooperative**

Our Community Employment Resource Centre

780.479.5443 Resumes Cover Letters Training **WE ARE OPEN**

Virtual and In person appointments

**FREE!!** #248 Riverview Crossing Mall formerly Abbottsfield Mall

**L I N K S**

- [Abbottsfield Recreation Centre \(ARC\)](#)
- [Abbottsfield Youth Project](#)
- [Boys & Girls Club/Big Brothers Big Sisters of Edmonton](#)
- [Northeast Edmonton ECD Coalition](#)

**L I N K S**

- [Norwood Child & Family Centre](#)
- [REACH Edmonton Council for Safe Communities](#)
- [Tegler Youth Centre](#)
- [WIN House](#)

**Building Hope  
Compassionate Association**

Building Hope Compassionate Association addresses the basic needs of low and no-income people in the Beverly Community since 2000 with a clothing bank, homeless outreach and light breakfast and lunch (9am-3pm) Mon-Tues-Wed.

3831 116 Avenue NW  
[summerbz@live.com](mailto:summerbz@live.com) 780-479-4504  
<https://rwyers.wixsite.com/website>

**SERVICES IN THE  
BEVERLY AND  
RUNDLE AREA**

**Local School Board Trustees**

Edmonton Public School Board Trustee  
Ward D  
Trisha Estabrooks  
[trisha.estabrooks@epsb.ca](mailto:trisha.estabrooks@epsb.ca) 780-292-5215

Edmonton Catholic School Board Trustee  
Ward 73  
Carla Smiley  
[carla.smiley@ecsd.net](mailto:carla.smiley@ecsd.net) 587-408 3589

## Political Representative Contacts

**City of Edmonton:**  
Tony Caterina  
Councillor Ward 7  
[Tony.caterina@edmonton.ca](mailto:Tony.caterina@edmonton.ca)  
Tonycaterina.ca  
780-496-8333

**Province of Alberta:**  
Deron Bilous  
MLA for Edmonton-Beverly-Clareview  
[Edmonton.beverlyclareview@assembly.ab.ca](mailto:Edmonton.beverlyclareview@assembly.ab.ca)  
[Albertandpcaucus.ca/your-mlas/deron-bilous](http://Albertandpcaucus.ca/your-mlas/deron-bilous)  
780-476-6467

**Government of Canada:**  
Kerry Diotte  
MP Edmonton Griesbach  
[Kerry.Diotte@parl.gc.ca](mailto:Kerry.Diotte@parl.gc.ca)  
[Kerrydiotte.com](http://Kerrydiotte.com)  
780-780-495-3261