



Photo courtesy of Gus Gustopherson

COMMUNITY CONNECTIONS

BEVERLY HEIGHTS
COMMUNITY LEAGUE
E NEWSLETTER

FEBRUARY 2021

Blue underlined text is a hyperlink.

IN THIS ISSUE

City of Edmonton News	Page 2
Rundle Heights Park Redevelopment	Page 2
Neighbourhood Notes	Page 3
Connecting: Links	Page 3
Community Partner Page	Page 4

Notes from the BHCL board

January Board Meeting

On January 12th the monthly Beverly Heights Community League board meeting was held virtually. Highlights include:

- ◆ The Beverly Heights hall, family centre and sports building will remain closed to rentals, programs and community events until stage 3 of the Alberta.ca Relaunch Strategy is reached. Current restrictions mandate community league facilities be closed.
- ◆ After a great deal of discussion, considering the EFCL (Edmonton Federation of Community Leagues) and the Government of Alberta guidance documents for safe outdoor rink reopening as well as the well-being of the community, the decision was made to keep the rink closed for this season.
- ◆ We have been slotted for a casino on April 1 & 2 at Century Casino. If the casinos re-open by this date we will need volunteers to fill the Thursday and Good Friday shifts (this is also during spring break).
- ◆ Save the Date! Our Annual General Meeting will be held Tuesday April 13, 2021.
- ◆ The EFCL Tripartite agreement is being reviewed to possibly reduce rental restrictions in place for renting to for-profit organizations. The revision should be complete in 2021.
- ◆ The Rundle Heights Playground Revitalization Committee continues work on planning and fundraising.

The next BHCL virtual board meeting is Tuesday February 9 at 6:30pm. Community league members are welcome to attend the monthly meetings, email volunteer.bhcl@gmail.com for a meeting link if you would like to join.

Beverly Heights Variety Show

COVID-19 has had a significant impact on all our lives including the volunteers, cast, crew, and of course the fans of the Beverly Heights Variety Show.

Unfortunately for the first time in fifty years, the ability to plan and produce this annual fund-raising event has been hampered by COVID-19 restrictions. The current mandatory and voluntary public health measures designed to limit the spread prohibits this size of gathering. As a result, formal plans have been put on hold with the hope that at sometime in 2021 we might get together again.

Stay in the loop:

Facebook: [Beverly Heights Variety Show](#)
Website: beverlyheights.ca/variety-show/
Email: varietyshow.bhcl@gmail.com

Get your 2020/2021 Membership

Your Community League membership card is valid from September 1 to August 31. Visit beverlyheights.ca/memberships/ for membership benefits and more information.

Price: \$25 Family \$15 Single \$5 Senior

Need a membership? Email Crystal at membersbhcl@hotmail.com. Once your information is confirmed she will review your payment options - send an etransfer to treasurer.BHCL@gmail.com or drop off / mail a cheque (payable to **Beverly Heights Community League**).

Once payment is received your card and skate tags will be delivered!

*Memberships are also available at
Edmonton Servus Credit Unions or online at
EFCL.org (service charge will be applied)*



*Stay
Safe*

2021 Pets of Beverly Calendar

You are in luck! 8 calendars are still available for \$20 each, featuring pets right from here in Beverly and Rundle Heights. Email Crystal at membersbhcl@hotmail.com.

Contact us!

Do you have questions for the board? Feel free to email Volunteer.BHCL@gmail.com or visit our website beverlyheights.ca

Join our Facebook group [Beverly Heights Community League \(Public Group\)](#) to keep in touch and to reach out if you need assistance.

City of Edmonton changes coming to our area

New Transit Routes Launch April 25, 2021

Have you noticed the new signage at bus stops? On April 25th the new transit routes will launch and our route 141/142 becomes Route 101 - a "local" route type.

The new route will start at Riverview Crossing, travel through our neighbourhood (same route as before), then will travel west along 112 Avenue to the Stadium Station, turn and go back the same way.

Route frequency will be 30 minutes or better on weekdays/midday on weekends and 60 minutes or better all late evenings/weekend morning and evenings.

New schedules and online route planning will be available soon. Find more information at https://www.edmonton.ca/projects_plans/transit/bus-network-redesign.aspx

Transit Price Increase February 1

The cash fare for adult, seniors and youth remain at \$3.50, but the cost of ticket packs and monthly passes is increasing. Click [here](#) for more details.

Garbage & Food Scrap Carts

Last year our neighbours in Beacon Heights were part of a pilot project with garbage and food scrap carts. This initiative will roll out to the rest of the city in 2021. The new carts do not impact those in apartments or condos that have large garbage and recycling bins, but will impact those that have regular weekly trash and recycling pick up.

Here are some things to note:

- Carts will be delivered to homes in this area in May, with service starting in the first week of June. There is a cost for replacement carts - be sure to mark with your address or name.
- You will receive a 240L trash bin, a 120L food scrap bin, and a food scrap pail (to use in the house). You will receive an information package and a new collection schedule.
- **IF YOU WISH TO RECEIVE A SMALL 120L GARBAGE CART YOU MUST REQUEST THIS BY FEBRUARY 12, 2021.** There is a cost savings on your utility bill.
- Garbage carts will be collected every two weeks.

- The food scraps cart is collected weekly from spring to fall, and every two weeks in winter. Yard waste and grass clippings can be added to your bin if there is space.
- Recycling is collected weekly - use the usual blue bags.
- Yard waste will be picked up seasonally, with two collections in the spring and two in the fall.

Click [here](#) for more details about the waste cart roll out, to request a small garbage cart, find out when your cart will be delivered, and to learn more about how to sort your trash, recyclables and food scraps.



Rundle Heights Park Redevelopment Project

Stay in the loop:

Facebook:

[Rundle Heights Park Redevelopment](#)

Website:

beverlyheights.ca/rundle-heights-park-redevelopment/

Donations with tax receipts

Looking for a way to support the park redevelopment but want a tax receipt? We can now accept donations of over \$20 and get the City of Edmonton to provide the tax receipts. If you are interested in donating please contact the committee at stjeromeparentcouncil@gmail.com or find the donation information on our Facebook page: Rundle Heights Park Redevelopment

Donate your bottles

Drop off your bottles at the Beverly Bottle Depot and ask that the proceeds are added to the Rundle Heights Park Project. Your donation adds up!

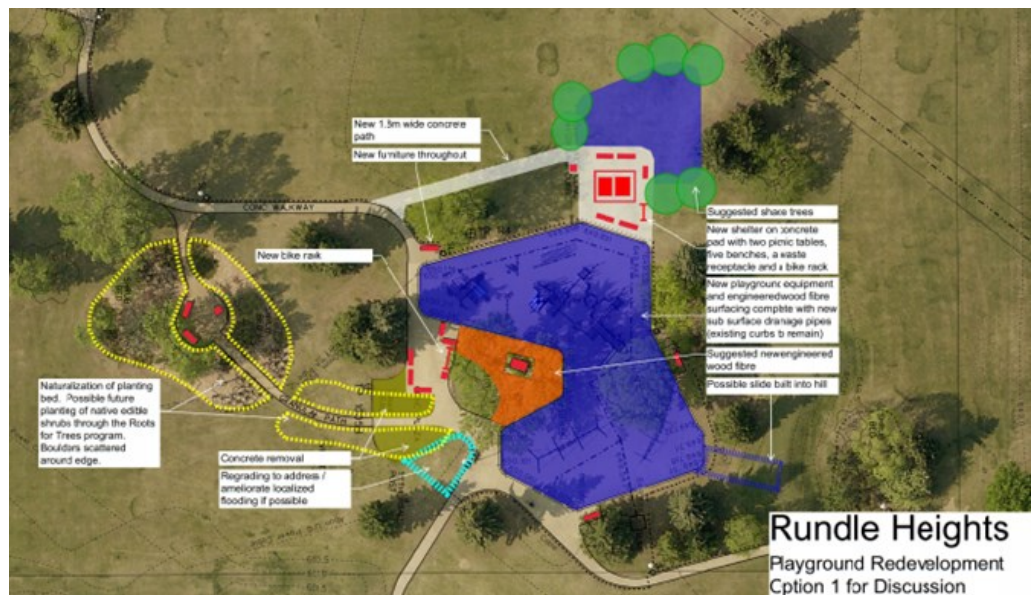
Concept Phase Update

We had our 3rd meeting with the City of Edmonton landscape architect to go over our wish list, survey results and the initial concept drawing. It is exciting to see some progress and really hash out some of the larger pieces of information. From our meeting and the feedback provided she will come up with our next concept drawing, and a new estimated budget.

Once we approve the concept drawing, we will need to come up with a large deposit and move into the design phase, where we talk more specific looks, equipment and materials and then the project goes out to tender. We are hoping to be in this phase by Summer 2021 which puts us on track for a Summer 2022 install and grand opening, pending funding is all in place.

We have a long way to go with funding, watch for more fundraisers coming soon!

**Note this is the original concept drawing, we made a lot of notes and tweaks and the landscape architect will come back with another version at our February Meeting.*



**Rundle Heights
Playground Redevelopment
Option 1 for Discussion**

Neighbourhood notes

Sidewalk Sand:

Are your sidewalks slippery? The City of Edmonton fills the grey sidewalk sand box located in the parking lot, just east of the Beverly Hall at 4209 111 Ave. Bring your own scoop and bucket. If empty please call 311 to request a refill.



Front Yards in Bloom: Winterscape

Visit www.edmonton.ca/winterscapes to learn about transforming your front yard into a winterscape using snow, ice, natural objects and lights. Contest starts January 12, prizes awarded weekly!

Virtual Babysitting Courses:

The City of Edmonton is offering virtual Red Cross Babysitting Courses. These courses offer basic first aid and caregiving skills for youth aged 11-15. Participants learn how to provide care and respond to emergencies and offer youth the skills to promote themselves as babysitters to prospective families. Call 311 or register online at MoveLearnPlay.Edmonton.ca.

Report Crime: Remember if you see something suspicious report it by calling 780-423-4567 or on the EPS Mobile App.

City of Edmonton Election: Campaigning has already started for the councillors and mayor for the City of Edmonton in October 2021. Because Community Leagues are non-partisan we will not be sharing any campaign information nor will we allow candidates to post on our social media page. We encourage you to learn about the candidate platforms and be sure to get out and vote! As you are also likely aware, the wards will change for this election and rather than our current Ward 7, our ward will be known as Metis Ward as of October 18, 2021.

Support the 118 Ave Businesses:

The Beverly Business Association has launched a new website and social media campaign. Their goal is to revitalize the Olde Towne Beverly business district, featuring its small town atmosphere and historic roots, market it to strengthen existing businesses and attract new businesses, shoppers and tourists. Watch for new banners and street blades (signage with streets) coming soon!

Seniors Helping Seniors: The Edmonton Lifelong Learners Association (ELLA) is pleased to announce 33 continuing education courses are now available through [online](#) delivery for adults aged 50+. Our collaboration with the University of Alberta is making online learning more accessible and interesting for seniors across the capital region than ever before.

Our courses have no prerequisites, homework, or exams, just lots of opportunity to learn. Courses start January 4, 2021 and some run all the way till March 26, 2021. These courses range in price from \$35.00 to \$160.00.

An ELLA membership is required to take courses. An ELLA membership also entitles members to free noon hour presentations running every Friday from January 8 to March 26. Get started at my-ella.com to get your membership and register in courses.

Community Conversation: Join the Beverly Heights Community League Public Group on Facebook and join the weekly conversation! Topics are posted Sunday with a winner chosen at random from the comments. The winner receives a reusable BHCL bag.

School Open Houses: Virtual open houses for schools in the area will be planned for February and March. Visit the [Edmonton Public School Board](#) or [Edmonton Catholic School District](#) websites for details.

eNewsletter: We hope you enjoyed this eNewsletter! Please share with friends and neighbours in the area.

Do you have suggestions for stories? Questions to be answered? Let us know!

Connecting in your community

Facebook links:

[Beverly Heights Community League](#)

[Rundle Heights Park Redevelopment](#)

[Beverly Historical Society](#)

[Beverly Page Community News and Classifieds](#)

[Beverly Business Association](#)

[YourAlberta \(Government of Alberta\)](#)

[City of Edmonton](#)

[City of Edmonton Recreation Centres](#)

[Edmonton Public Library](#)

Websites:

[Alberta.ca](#) (for COVID information)

[BeverlyHeights.ca](#)

[Beverly Historical Society](#)

www.beverlybia.ca

Abundant Community Beverly/Rundle



Rayna Haythorne
780-710-5777 (call or text)
neighbouringbeverly@gmail.com

Website Links (click to follow):

[Abundant Community Edmonton](#)

[Connected Neighbours Community Card:](#)

Print, fill it in, and drop it off in your neighbours' mailbox!

Block Connectors Resource Guide: Find out more about how Abundant Community works and your role as a Block Connector.



Community Connections

Beverly Heights Community League eNewsletter

Editor: Tracey Hirtle,
BHCL Publicity & Communications Director

Volunteer.BHCL@gmail.com

BeverlyHeights.ca

Main Hall & Family Centre:

4209 111 Ave NW, Edmonton AB T5W 0K3
780-477-2458

Sports Building (Rink):

10906 40 St NW 780-477-5318

Rental Inquiries: Rentals.BHCL@gmail.com

General Inquiries: Volunteer.BHCL@gmail.com



Community Partner Page

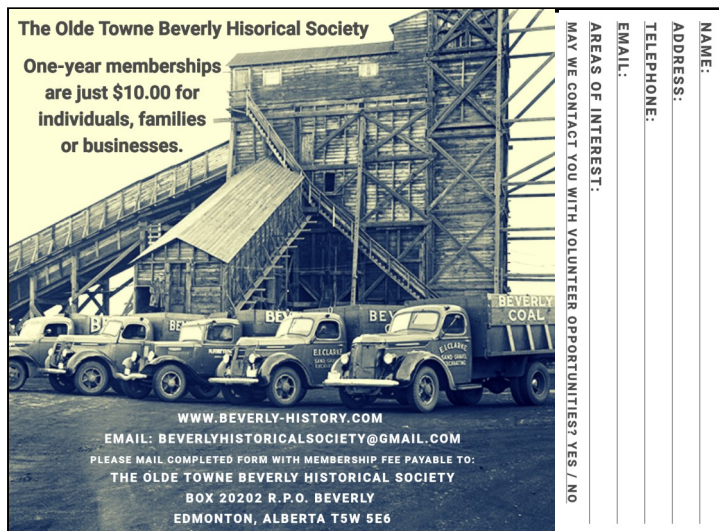
Beverly Business Association



There is lots to love about Beverly

Visit our new website beverlybia.ca for information on upcoming events and news for 2021!

Olde Towne Beverly Historical Society



The Olde Towne Beverly Historical Society

One-year memberships are just \$10.00 for individuals, families or businesses.

NAME: _____
ADDRESS: _____
TELEPHONE: _____
EMAIL: _____

AREAS OF INTEREST: _____
MAY WE CONTACT YOU WITH VOLUNTEER OPPORTUNITIES? YES / NO _____

WWW.BEVERLY-HISTORY.COM
EMAIL: BEVERLYHISTORICALSOCIETY@GMAIL.COM
PLEASE MAIL COMPLETED FORM WITH MEMBERSHIP FEE PAYABLE TO:
THE OLDE TOWNE BEVERLY HISTORICAL SOCIETY
BOX 20202 R.P.O. BEVERLY
EDMONTON, ALBERTA T5W 5E6



PrimaryCare Network
EDMONTON NORTH | Rundle Health Centre

enpcn.com 780-479-1533

Group programs are offered virtually and you can self-refer.

SERVICES IN THE BEVERLY AND RUNDLE AREA



Wecan Cooperative

Our Community Employment Resource Centre

780.479.5443 Resumes Cover Letters Training WE ARE OPEN

Virtual and In person appointments

FREE!! #248 Riverview Crossing Mall formerly Abbottsfield Mall

L I N K S

- [Abbottsfield Recreation Centre \(ARC\)](#)
- [Abbottsfield Youth Project](#)
- [Boys & Girls Club/Big Brothers Big Sisters of Edmonton](#)
- [Northeast Edmonton ECD Coalition](#)

L I N K S


- [Norwood Child & Family Centre](#)
- [REACH Edmonton Council for Safe Communities](#)
- [Tegler Youth Centre](#)
- [WIN House](#)

Candora is here to help!

Although our doors are closed and regular programming is on hold, the Candora Society is still here to help in Abbottsfield, Beverly, and Rundle communities!

- Our Weekly Community Lunch is being served as a bagged lunch at the Abbottsfield Rec Centre (ARC 3006-119Ave) on Thursdays at noon.
- Our Resource Workers are available to help remotely over the phone or via email over a wide range of supports.
- We can help with: CERB/EI Applications, Alberta Works/AISH, Renter's Advocacy, Accessing Food Resources, Family and Parenting Supports and Resources, Finding Health Supports, Additional Supports and Referrals, And more!
- Staff are available to help who speak Somali, Arabic, Spanish, and Tigrinya.

To connect with our workers please call 780-474-5011 or via email info@candorasociety.com. From there, we will direct your email to a staff team member who will be able to help you.



Political Representative Contacts

City of Edmonton:
Tony Caterina
Councillor Ward 7
Tony.caterina@edmonton.ca
Tonycaterina.ca
780-496-8333

Province of Alberta:
Deron Bilous
MLA for Edmonton-Beverly-Clareview
Edmonton.beverlyclareview@assembly.ab.ca
Albertandpcaucus.ca/your-mlas/deron-bilous
780-476-6467

Government of Canada:
Kerry Diotte
MP Edmonton Griesbach
Kerry.Diotte@parl.gc.ca
Kerrydiotte.com
780-780-495-3261